

# Commitment and Jail Diversion Strategies in Mississippi



## Increase Awareness of 988 and Mobile Crisis Response Teams

- ▶ **20%** increase in calls to 988 to reach a trained counselor 24/7
- ▶ Enhanced funding to Mobile Crisis Response Teams
- ▶ **9,877** calls to Mobile Crisis Response Teams
- ▶ **21%** of calls required a face-to-face response

## Maximize Utilization of Crisis Stabilization Beds

- ▶ **180** CSU beds statewide
- ▶ CSU in every Community Mental Health Center (CMHC) region
- ▶ CSU enhancement funding provided to treat patients with a higher level of need
- ▶ Additional **60** beds coming in 2024
- ▶ Bed Registry open to Chancery Clerks to see bed availability statewide
- ▶ **92%** diversion rate to state hospitals
- ▶ Served **3,402** in FY23

## Maximize Utilization of Court Liaisons

- ▶ Funded **33** Court Liaisons statewide
- ▶ Employed by CMHC and works closely with Chancery Clerk, law enforcement and local hospitals
- ▶ **Goals of the Court Liaison program are:**
  - Reduce number of involuntary commitments to state hospitals
  - Reduce time and exposure people have with law enforcement and the criminal justice system
  - Increase knowledge and usage of community-based services
  - Increase collaboration with families, courts, law enforcement, and hospitals on behalf of CMHCs and the people they serve

## Maximize Utilization of Intensive Community Support Services

- ▶ Designed for people with multiple hospitalizations and are monitored to fidelity
- ▶ Served **796** in Programs of Assertive Community Treatment Teams with **7%** readmitted to a state hospital
- ▶ Served **638** in Intensive Community Outreach and Recovery Teams with **8%** readmitted to a state hospital
- ▶ Served **781** in Intensive Community Support Services with **15%** readmitted to a state hospital

## Decrease Same Level of Care Transfers

- ▶ Enhance communication with hospitals that provide acute psychiatric services to encourage treatment and discharge and decrease transfers to the state hospitals
- ▶ **39%** of all state hospital admissions in FY23 were from a same level of care

Decreased Average Length of Wait for a State Hospital Bed by **55%** in FY23  
Increased State Hospital Bed Capacity by **18%** in FY23



# Mississippi Department of Mental Health Senate Public Health Hearing 2024



MENTAL HEALTH



INTELLECTUAL AND DEVELOPMENTAL  
DISABILITY SERVICES



ALCOHOL AND DRUG  
ADDICTION SERVICES

1



## What is the state's mental health system?

Mississippi's mental health service delivery system comprises three major components:

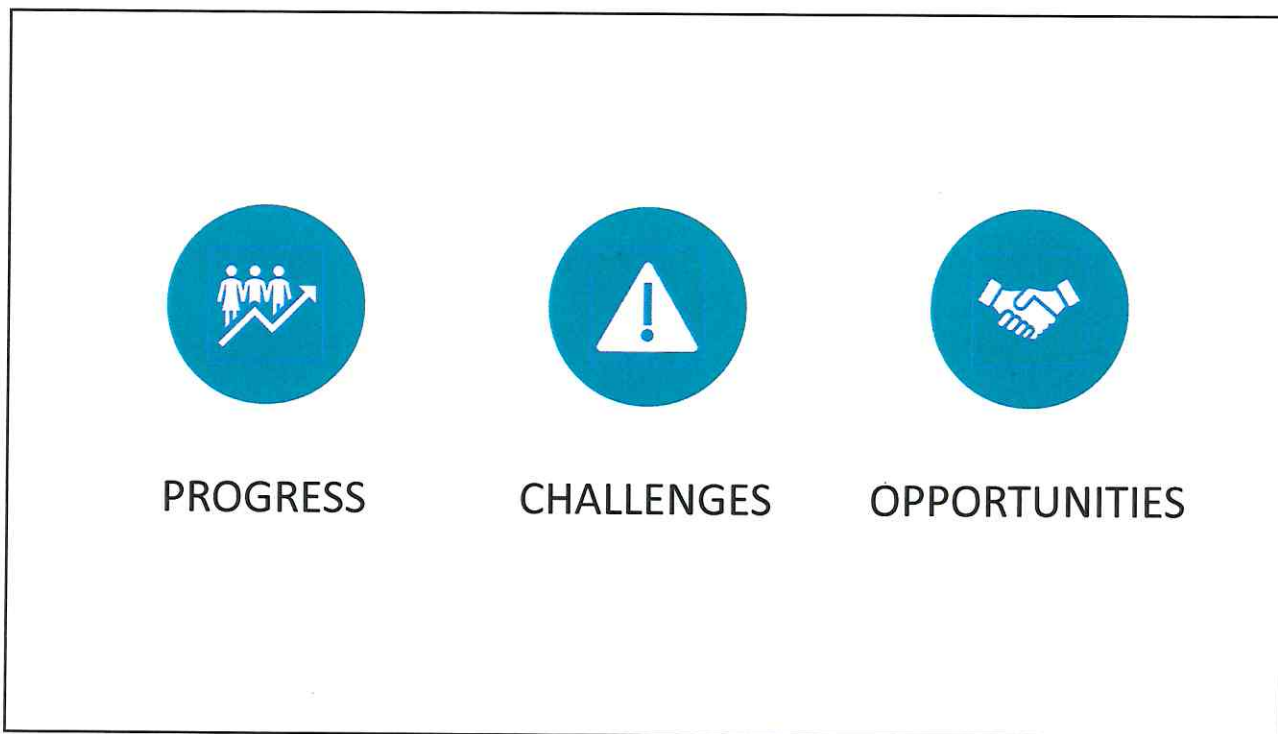
state-operated programs and community service programs,

regional community mental health centers, and

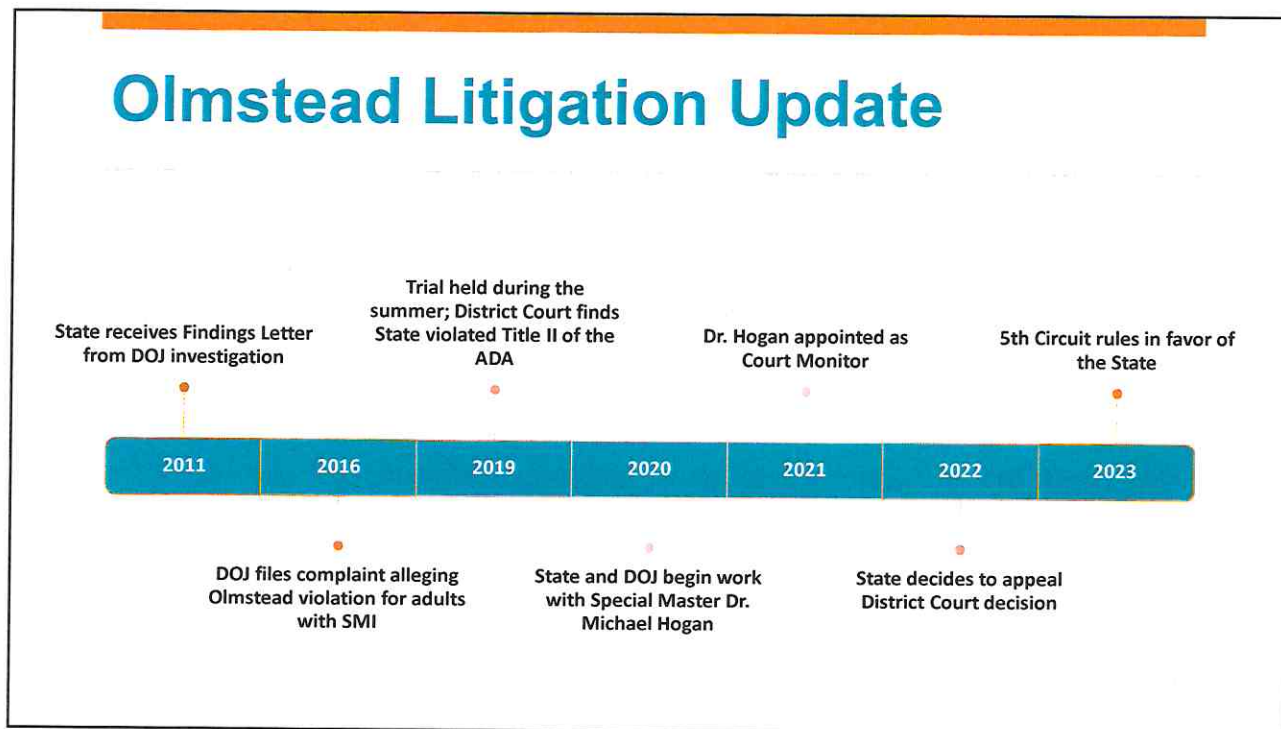
other nonprofit/profit service agencies/organizations.



2



3



4

# State of Mental Health in America 2023 Report

**Adult Ranking** – 28<sup>th</sup> compared to 41<sup>st</sup> in the previous report. Compares prevalence of mental illness and access to care.

**Youth Ranking** – 19<sup>th</sup> compared to 16<sup>th</sup> in the previous report. Compares prevalence of mental illness and access to care.

**Access to Care** – 42<sup>nd</sup> compared to 47<sup>th</sup> in the previous report. Access measures include access to insurance, access to treatment, quality and cost of insurance, access to special education, and mental health workforce availability.

**Adults with Mental Illness Who Did Not Receive Treatment** – 41<sup>st</sup> compared to 44<sup>th</sup> in previous report.

**Youth with Mental Illness Who Did Not Receive Services** – 23<sup>rd</sup> compared to 50<sup>th</sup> in previous report.

**Mental Health Workforce Availability** – 42<sup>nd</sup> compared to 44<sup>th</sup> in previous report.

**Overall Ranking – Mississippi is 25<sup>th</sup> Compared to 36<sup>th</sup> in previous report.**

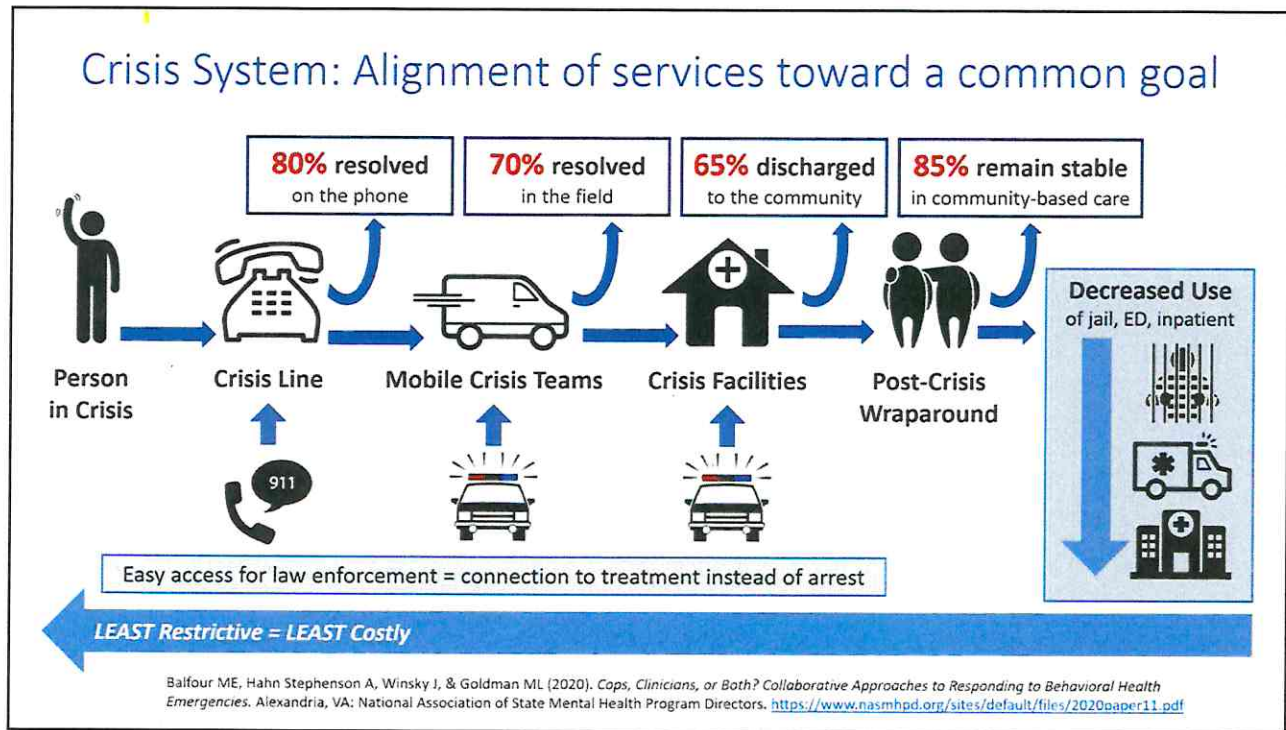
5

## Mental Health FY23 Highlights

- 1,965 acute psychiatric admissions vs. 1,684 in FY22. Increase due to re-opening 50 beds.
- 11% decrease from 2,212 admissions in FY19.
- 55% decrease wait time for acute psychiatric. Five days in FY23 vs. 11 days in FY22. Currently 4 days.
- MSH's Psychiatry Residency Program added third class of residents and began operating outpatient clinic on campus.
- 988 Suicide and Crisis Lifeline - 13,549 calls a 20% increase from previous year. Mississippi has one of the top 10 highest in-state answer rates in the nation.
- 207 children/youth served at STF and MSH Oak Circle Center.
- Construction on 81-bed Forensic Services Unit at MSH.



6



9

## Addiction Services FY 23 Highlights

---

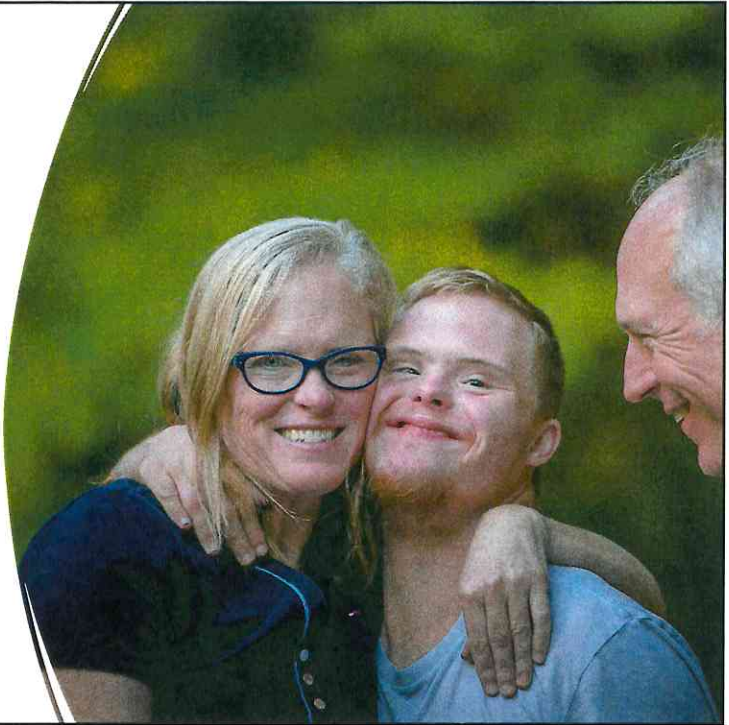
- ESMH serves males and MSH serves females. 180 people diverted from inpatient treatment to community-based services.
- 225 served at MSH SUD treatment unit. 381 served at ESMH SUD treatment unit. 60 beds.
- 4,369 people served in community residential treatment. Total 624 beds.
- 6,184 doses of Narcan distributed to first responders and providers to prevent opioid overdose deaths.
- Expansion of Congregational Recovery Outreach Program.



10

## IDD Services FY23 Highlights

- 86% of people served in a community setting vs. institution. 724 served on campus and 4,362 served in the community – 531 of those in the state-operated community homes.
- 21 transitioned from IDD Regional Programs to community-based care. 11 transitioned from Community Homes to the Waiver.
- 2,733 served through the ID/DD Waiver. 123 new enrollees during the year.
- 1,078 served through the 1915i Community Support Program. 129 new enrollees.
- 492 people employed through Supported Employment.



11

Decrease in  
Number of  
Employees



12




## 2024 Legislative Goals

- Changes to civil commitment statutes to improve diversion and restrict use of jails as a holding location for someone who have a civil commitment for acute psychiatric services.
- Funding to staff the 81-bed Forensic Services Unit at MSH to open in the fall of 2024.
- Expand Home and Community Based Services to prevent institutionalization for people with IDD.
- Continue to address workforce challenges.




13



## Goals for FY24 and FY25

- Increase crisis stabilization bed availability and utilization.
- Coordinate 988 in Mississippi for behavioral health crisis.
- Expand access to addiction treatment services.
- Increase availability of crisis services for people with IDD.
- Increase access to intensive/crisis services for children and youth.
- Utilize court/hospital liaisons for diversion from state hospitals.
- Expand Home and Community Based Services to prevent institutionalization for people with IDD.
- Increase prevention efforts for opioid use.
- Expand mental health law enforcement training.
- Develop three peer respite programs for diversion.
- Open the 81-bed Forensic Services Unit at MSH.



14



15